

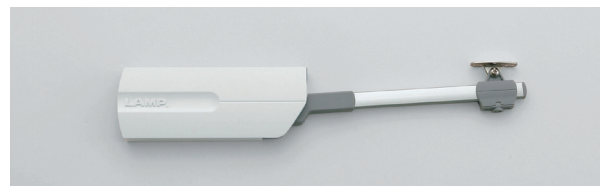
- For upward-opening flap doors.
- Can be used with concealed, piano, or butt hinges.
- Lift-assist mechanism for extra-light opening.
- Door stays in any desired position.
- Damper equipped for soft & silent closing at the end.
- Easy-installed just by aligning the main body to the inside cabinet corner.
- Single or pair use allows wide range of door sizes/weights.
- Recognized by LGA for 40,000 cycles.

Parts Included

- Mounting plate for wooden door
- Countersunk head tapping screw 3.5 x 35 for main body (2 pcs)
- Binding head tapping screw 3.5 x 15 for mounting plate (2 pcs)
- Truss head screw M4 x 5 for mounting plate (1 pc)

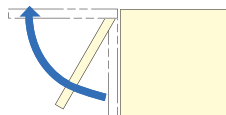
Remarks

- Hinge is not included.

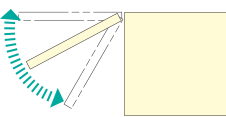


3 Functions in 1 Stay

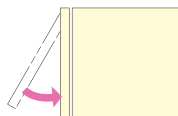
1. Lift-assist



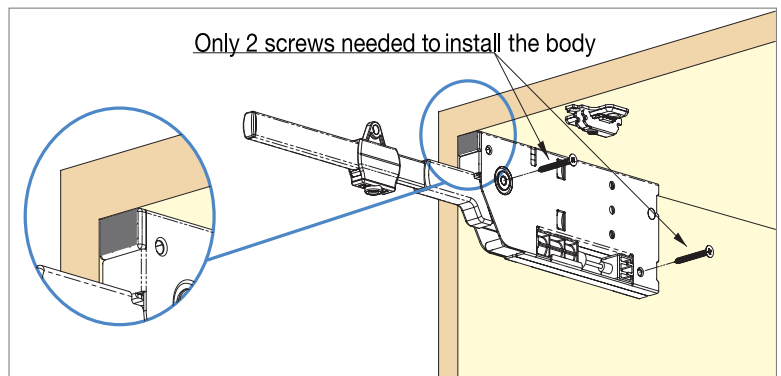
2. Free-stop



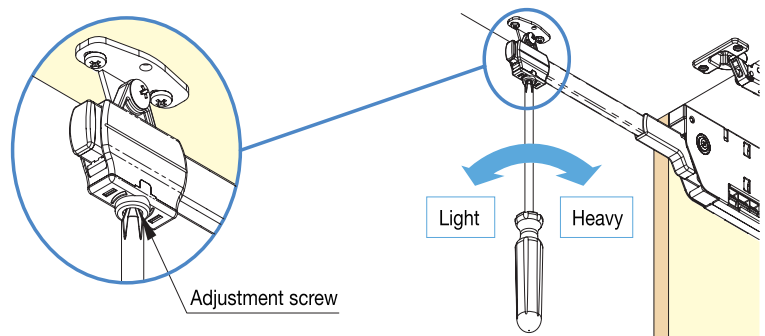
3. Soft Close



Easy Installation

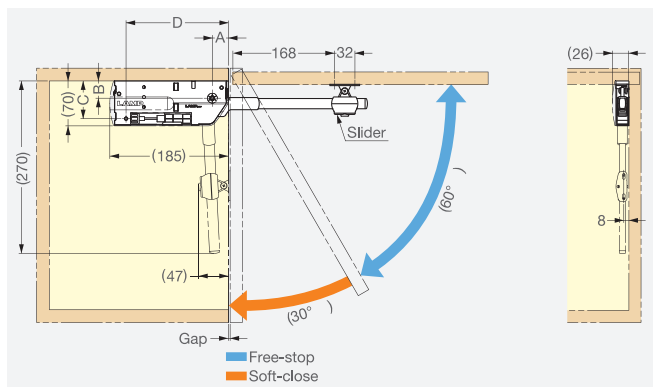


Adjustment of Lift-assisting Force

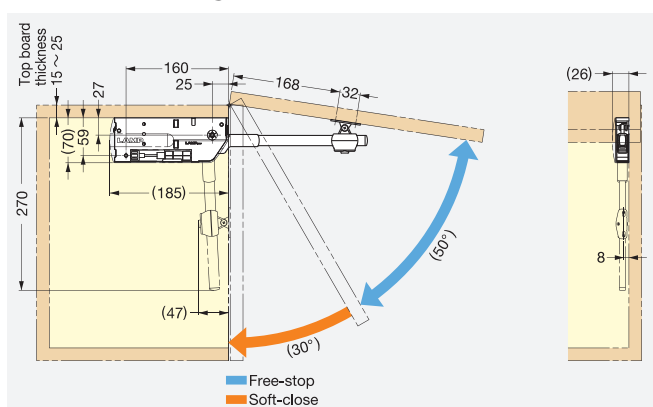


Installation (Right Side)

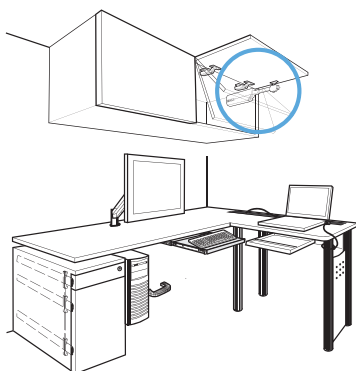
With Concealed Hinge



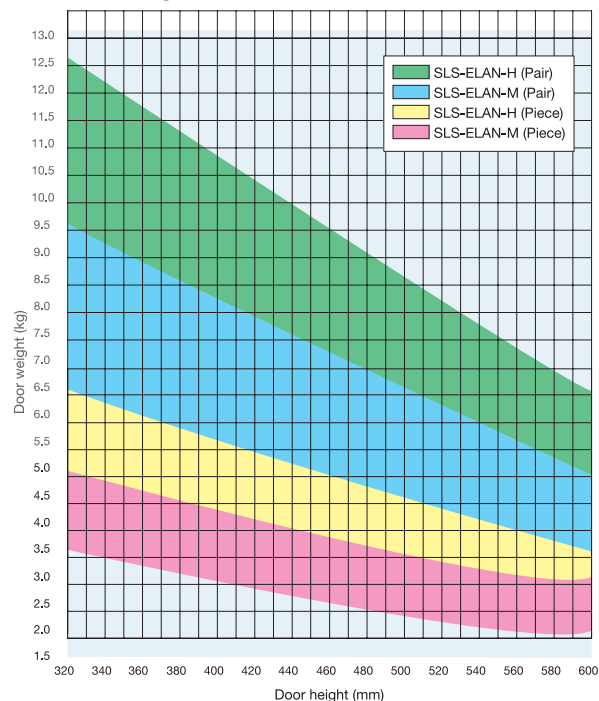
With Concealed Hinge



Application Example



Door Size Ranges



SPECIFICATIONS

| ITEM CODE | ITEM NAME | TYPE | MATERIAL | FINISH/COLOUR | MODEL | TORQUE MOMENT/PIECE |
|------------|----------------------------|-------|---------------------|-------------------------|-------|----------------------------------|
| NV-ELAN-ML | EASY LIFT-UP STAY MEDIUM L | LEFT | ALUMINIUM ALLOY/ABS | ANODIZED/ LIGHT GREY | M | 4.90-7.35 N•m (50-75 kgf•cm) |
| NV-ELAN-MR | EASY LIFT-UP STAY MEDIUM R | RIGHT | | | | |
| NV-ELAN-HL | EASY LIFT-UP STAY HEAVY L | LEFT | | | H | 7.35-9.80 N•m (75-100 kgf•cm) |
| NV-ELAN-HR | EASY LIFT-UP STAY HEAVY R | RIGHT | | | | |