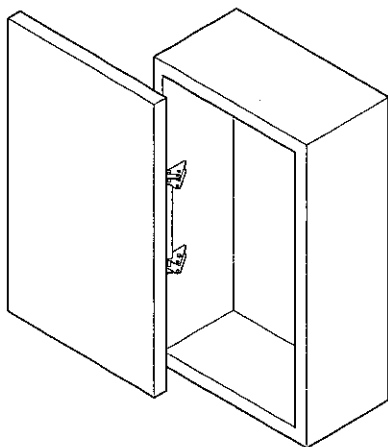


MonoFlat FAD-5 Instruction Manual PAT

Thank you for purchasing this MonoFlat FAD-5 by SUGATSUNE. Before proceeding with the installation, please read this instruction manual carefully for the best possible result and ensure your safety.



⚠ WARNING

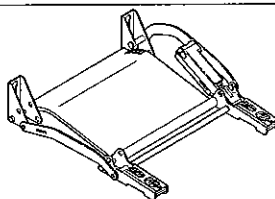
- Failure to observe the following precautions may result in injury and/or lead to damage to surrounding cabinets or fittings.
- Choose suitable screws to ensure of proper installation of the cabinet and door.
- Ensure that door size, weight and material correspond to the specifications stated in this manual.
- Do not disassemble or modify the system.
- Operation temperature range is 0°C ~ 40°C.
- This product was manufactured and delivered with our utmost care. Should you however find any defect, please contact your dealer immediately.
- The Warranty period is one year after shipment date. Sugatsune's liability shall be limited to replacement of the product and will in no case extend to the assembly as a whole.

■ Product Specification

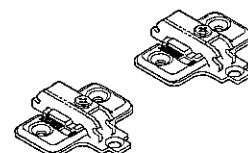
Door width	270 ~ 350mm
Door height	260 ~ 650mm
Door thickness	15 ~ 20mm
Door weight	Max 5kg(per door)

■ Parts List

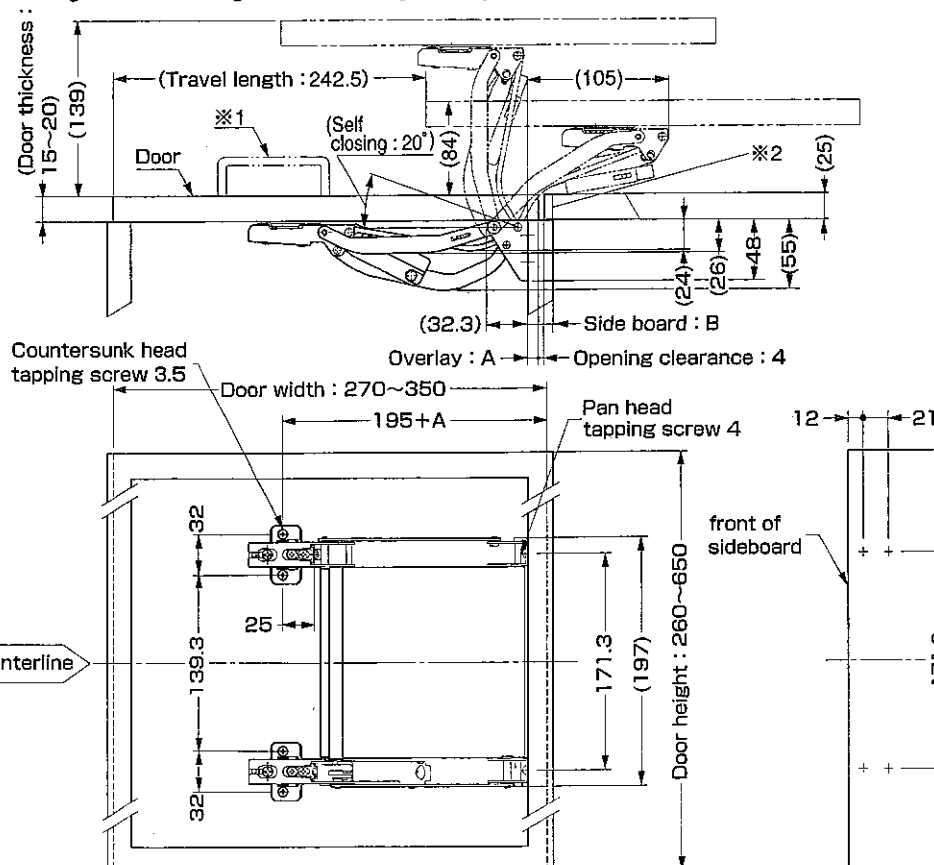
① FAD-5 Body.....1 pc.



② Mounting Plate...2pcs.



■ Overall (unit: mm) Picture shows the left hand door use. (Right hand door use is symetrically reverse.) Prepare the door and sideboard as the following dimensions.

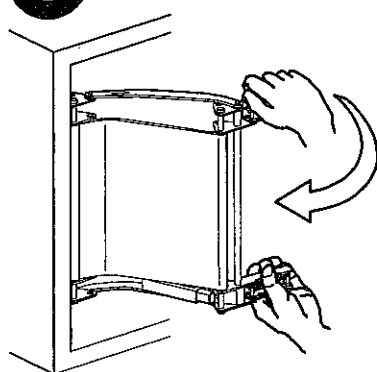


- ※ For the continuous doors installation,
- 1. Be careful for the handle position in the next door.
- 2. Be careful for the thickness of cushion material.(Ex: If the door thickness is 20 mm, cushion must be less 3mm/thick.)

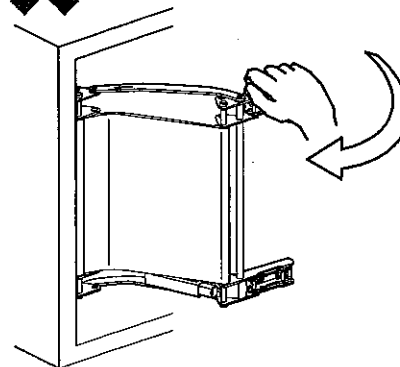
side board B (mm)	Overlay A(mm)				
	5	6	7	8	8.5~
15	21.5	—	—	—	—
16	22.5	21.5	—	—	—
17	23	22.5	—	—	—
18	23	22.5	—	—	—
19	23	—	—	—	—
20	23	—	—	—	—
21~	23	—	—	—	—
Total thickness of door and cushion(mm)					

! WARNING Do not use excessive force when operation the system.

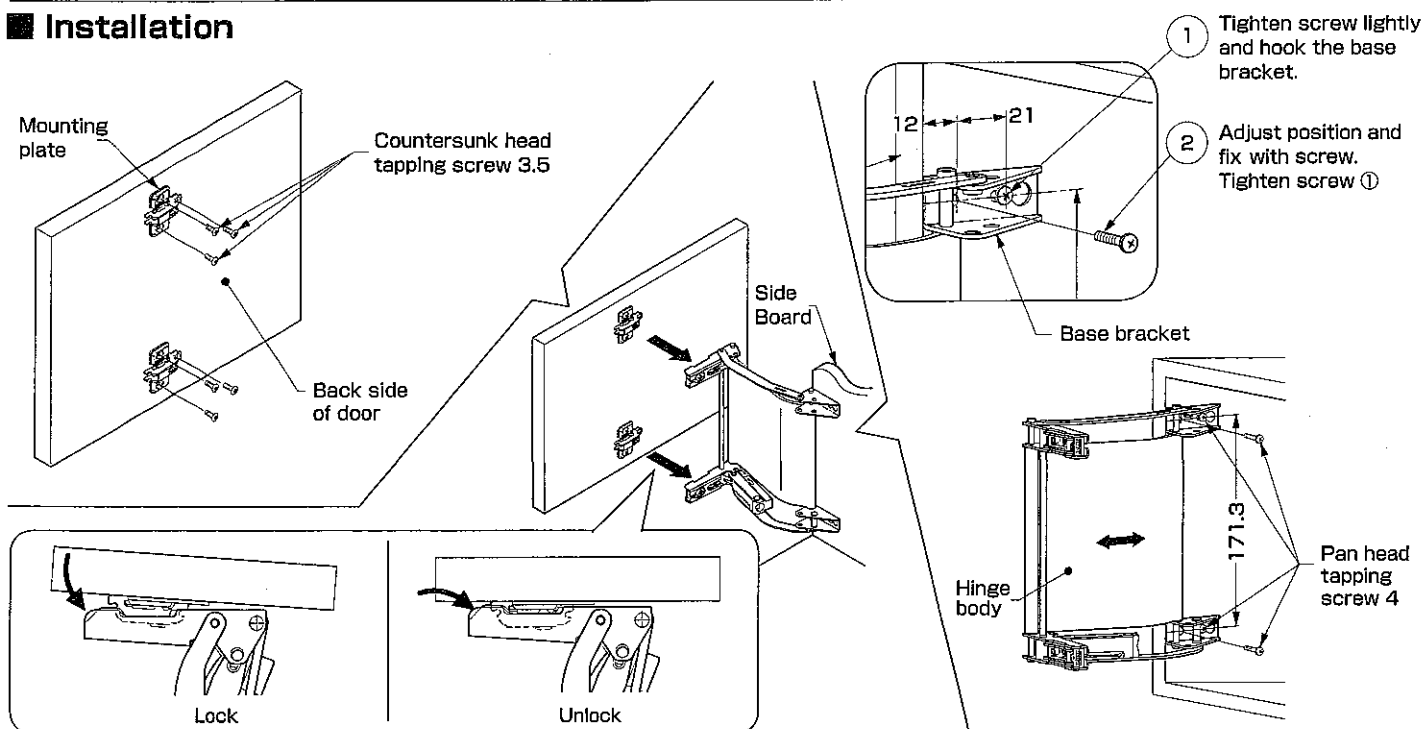
○ Hold always move both arms at the same time.



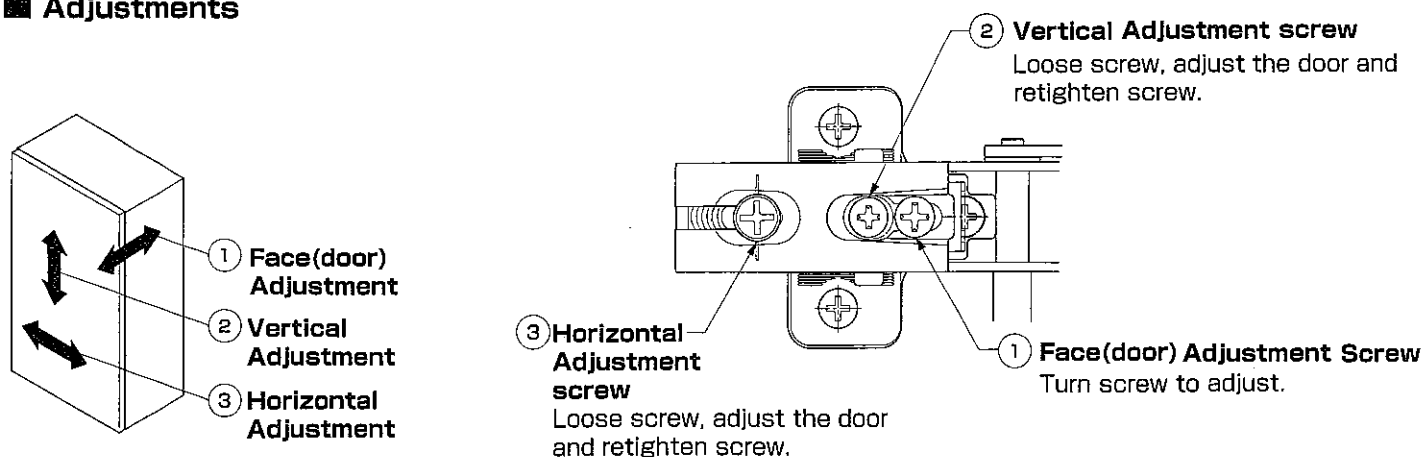
✗



■ Installation



■ Adjustments



■ Ensure that all the screws are securely tightened.
Remove all the protection tape after assembly is finished.

SUGATSUNE KOGYO CO.,LTD.
Phone: +81 3 3866 2260
F a x : +81 3 3866 4447
E-mail: export@sugatsune.co.jp
Website: www.sugatsune-intl.com

SUGATSUNE KOGYO (UK) LTD.
Phone: +44 118 9272 955
F a x : +44 118 9272 871
E-mail: sales@sugatsune.co.uk
Website: www.sugatsune.co.uk

SUGATSUNE AMERICA, INC.
Phone: +1 310 329 6373
F a x : +1 310 329 0819
E-mail: sales@sugatsune.com
Website: www.sugatsune.com

SUGATSUNE SHANGHAI CO., LTD.
Phone: +86 21 3632 1858
F a x : +86 21 3632 1868
E-mail: lamp@sugatsune.com.cn
Website: www.sugatsune.com.cn

ISO9001(Japan Offices and Sugatsune America) and ISO14001(Chiba Production division and Logistic center), certified.