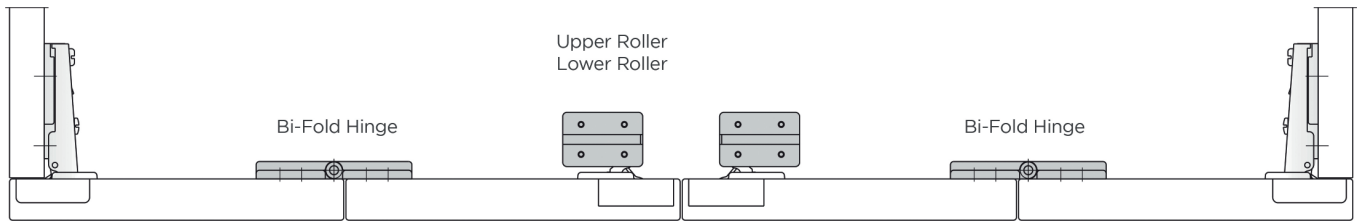
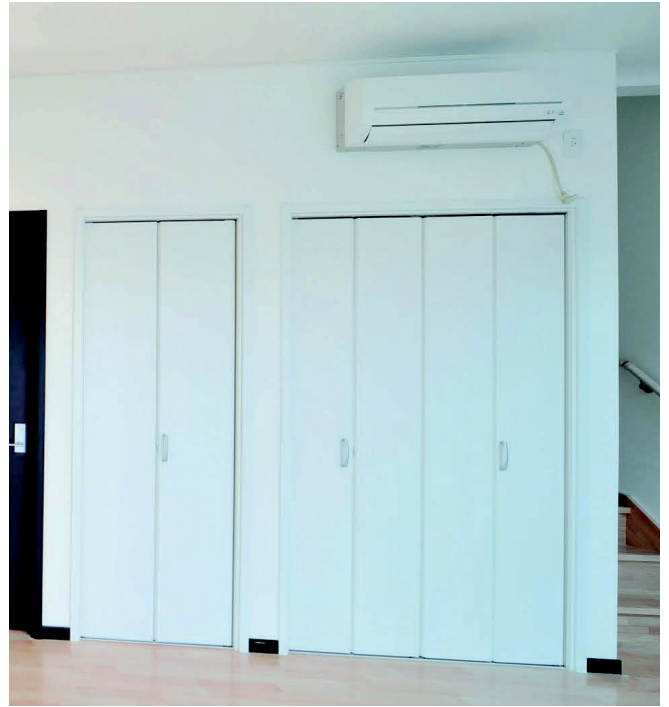


# DOOR CONTROL

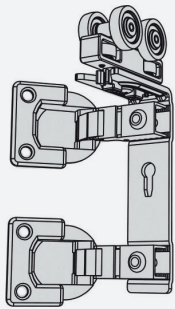
## INDAUX ELITE BI-FOLD SYSTEM

Item Code	Item	Finish	Quantity
NV-BIFUpper	Upper Track	Anodised Aluminium	3m Length
NV-BIFLower	Lower Track	Anodised Aluminium	2m Length
NV-BIFRoller	Top Roller	N/A	Each
NV-BIFLRoller	Lower Roller	N/A	Each
NV-BIFHinge	Nylon Hinge	N/A	Each

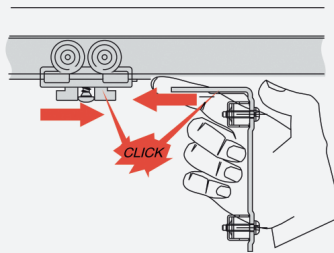
- Note the Indaux Folding Door System has a 25kg weight rating
- Note place sliding door intermediate hinges over the swing door hinges



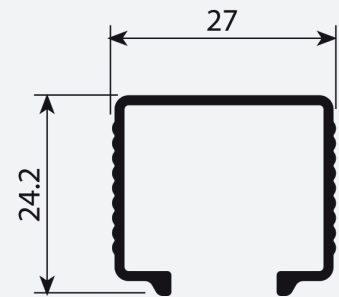
### UPPER TRACK & ROLLER



Bi-fold Upper Roller

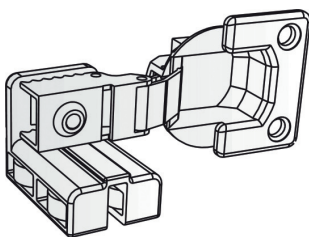


Bi-fold Upper Roller and Track Diagram

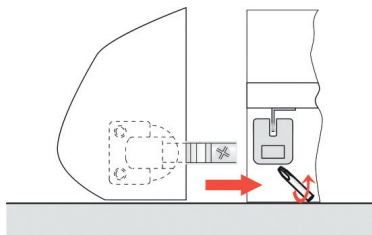


Bi-fold Upper Track Dimensions

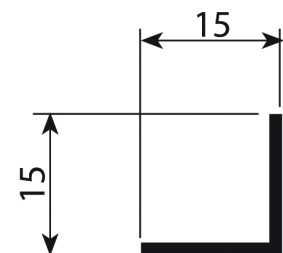
### LOWER TRACK & ROLLER



Bi-fold Lower Roller

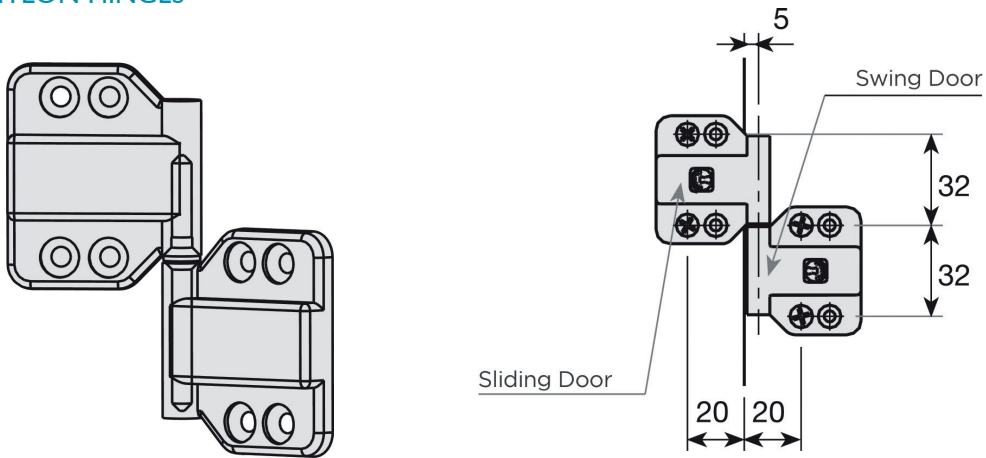


Bi-fold Lower Roller and Track Diagram

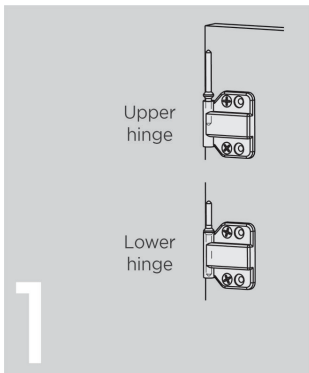
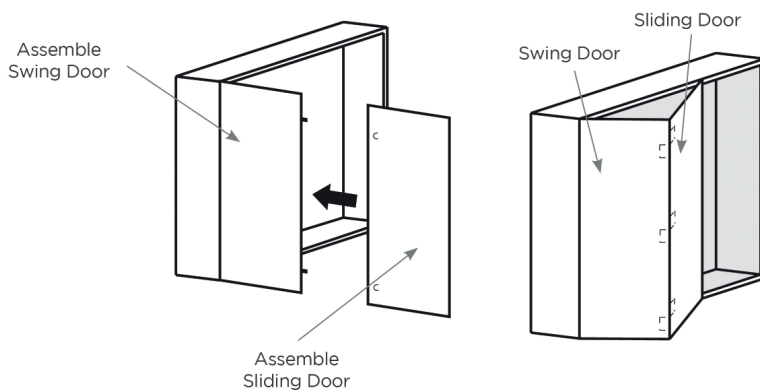


Bi-fold Lower Track Dimensions

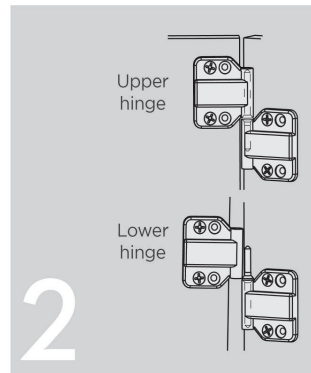
## NYLON HINGES



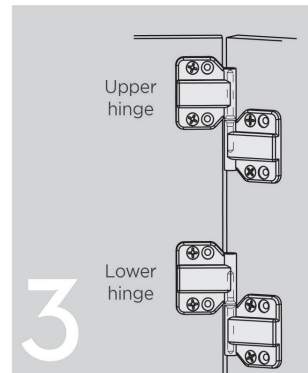
## NYLON HINGE ASSEMBLY



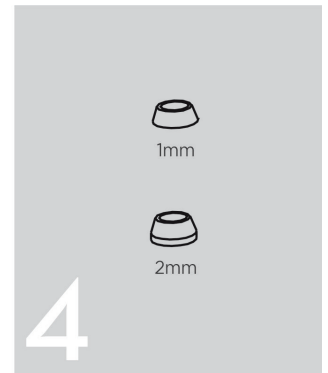
**Place shafts:**  
Insert the shortest side of the shaft in the upper hinge. Insert the longest side of the shaft in the lower hinge.



**Place sliding door:**  
Only the upper hinge must be inserted in the shaft.



**Assemble the door:**  
Lift the door and align upper and lower hinges onto their shafts. When the door falls, it automatically fits into place.



**Adjustments:**  
Please use washers provided.

**Note - Elite top roller must be fitted to the upper track prior to fixing upper track to the carcass.**