

Plastic Adjustable Cabinet Legs

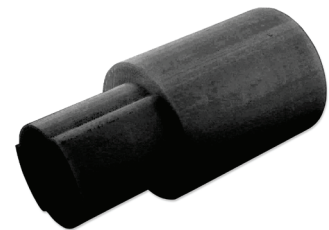
- Designed and manufactured in New Zealand.
- Robust and strong.
- Knock-in (10mm dowel) or screw-on base.
- Supplied as leg plus base, preset at 150mm.
- 150 per box (ASFA-EXT 50 per box).
- Components available separately.
- Plinth clips are compatible with Enko's PVC Plinth panel (toekick) - see overleaf.

PREMIUM SERIES SPECIFICATIONS

ADJUSTABLE 100 - 185mm	
ASFA1010	SCREW-ON BASE AND LEG
ASFA1011	KNOCK-IN BASE AND LEG
ASFAEXT	EXTENSION BLOCK ALLOWS EXTENSION TO 220MM
ADJUSTABLE 90-150mm	
ASFA3010	SCREW-ON BASE AND LEG
ASFA3011	KNOCK-IN BASE AND LEG
PLINTH CLIPS	
ASFA1110	PLINTH SUPPORT CLIP
PBCLIP - L	PVC PLINTH CLIP



PREMIUM SERIES



EXTENDER

STANDARD SERIES SPECIFICATIONS

ADJUSTABLE 120 - 170mm	
ASFA2210	SCREW-ON BASE AND LEG
ASFA2211	KNOCK-IN BASE AND LEG
PLINTH CLIPS	
ASFA2220	PLINTH SUPPORT CLIP
PBCLIP - S	PVC PLINTH CLIP



STANDARD SERIES

Plastic Adjustable Cabinet Legs and Plinth Panel (Toe Kick)

If you use traditional toe kick (melamine, MDF etc.) the Plinth Support Clips mentioned on the previous page allow easy attachments (and removal later if required) of the toe kick to the legs.



PLINTH CLIP SOLID BOARD

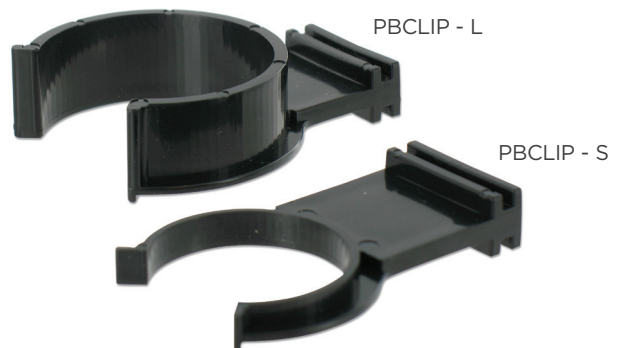


CLIP PIECES

If you use Enko's PVC toe kick these clips have a slightly different shape which allows them to be slid into the channel on the back of the PVC board, making for easy attachment to the legs.



PLINTH CLIP PVC PLINTH



CLIPS FOR PVC PLINTH